

# AGENDA

**Meeting:** Pewsey Area Board  
**Place:** Burbage Village Hall, 58-60 Eastcourt Road, Burbage, SN8 3AJ  
**Date:** Monday 11 November 2019  
**Time:** 7.00 pm

---

**The Area Board welcomes and invites contributions from members of the public. The chairman will try to ensure that everyone who wishes to speak will have the opportunity to do so.**

If you have any requirements that would make your attendance at the meeting easier, please contact your Democratic Services Officer.

**Refreshments and networking opportunity from 6:30pm.**

---

Please direct any enquiries on this Agenda to Craig Player Democratic Services Officer, direct line 01225 713191 or email [craig.player@wiltshire.gov.uk](mailto:craig.player@wiltshire.gov.uk)

All the papers connected with this meeting are available on the Council's website at [www.wiltshire.gov.uk](http://www.wiltshire.gov.uk)

Press enquiries to Communications on direct lines (01225) 713114 / 713115.

---

## **Wiltshire Councillors**

Cllr Jerry Kunkler, Pewsey  
Cllr Paul Oatway QPM, Pewsey Vale  
Cllr Stuart Wheeler, Burbage and The Bedwyns

## **RECORDING AND BROADCASTING NOTIFICATION**

Wiltshire Council may record this meeting for live and/or subsequent broadcast on the Council's website at <http://www.wiltshire.public-i.tv>. At the start of the meeting, the Chairman will confirm if all or part of the meeting is being recorded. The images and sound recordings may also be used for training purposes within the Council.

By entering the meeting room you are consenting to being recorded and to the use of those images and recordings for broadcasting and/or training purposes.

The meeting may also be recorded by the press or members of the public.

Any person or organisation choosing to film, record or broadcast any meeting of the Council, its Cabinet or committees is responsible for any claims or other liability resulting from them so doing and by choosing to film, record or broadcast proceedings they accept that they are required to indemnify the Council, its members and officers in relation to any such claims or liabilities.

Details of the Council's Guidance on the Recording and Webcasting of Meetings is available on request.

### **Parking**

To find car parks by area follow [this link](#). The three Wiltshire Council Hubs where most meetings will be held are as follows:

**County Hall, Trowbridge**  
**Bourne Hill, Salisbury**  
**Monkton Park, Chippenham**

County Hall and Monkton Park have some limited visitor parking. Please note for meetings at County Hall you will need to log your car's registration details upon your arrival in reception using the tablet provided. If you may be attending a meeting for more than 2 hours, please provide your registration details to the Democratic Services Officer, who will arrange for your stay to be extended.

### **Public Participation**

Please see the agenda list on following pages for details of deadlines for submission of questions and statements for this meeting.

For extended details on meeting procedure, submission and scope of questions and other matters, please consult [Part 4 of the council's constitution](#).

The full constitution can be found at [this link](#).

For assistance on these and other matters please contact the officer named above for details

	<b>Items to be considered</b>	<b>Time</b>
1	<p><b>Welcome and Introductions</b></p> <p>The Chairman will welcome those present at the meeting.</p>	<b>7.00pm</b>
2	<p><b>Apologies for Absence</b></p>	
3	<p><b>Minutes</b> (<i>Pages 5 - 8</i>)</p> <p>To confirm the minutes of the meeting held on 02 September 2019.</p>	
4	<p><b>Declarations of Interest</b></p> <p>To receive any declarations of disclosable interests or dispensations granted by the Standards Committee.</p>	
5	<p><b>Chairman's Announcements</b> (<i>Pages 9 - 10</i>)</p> <p>The Chairman will make the following announcements:</p> <ul style="list-style-type: none"> <li>• We're Targeting Fly-tippers</li> </ul>	<b>7.05pm</b>
6	<p><b>Partner Updates Part 1</b> (<i>Pages 11 - 30</i>)</p> <p>To also receive any updates from partner organisations:</p> <ul style="list-style-type: none"> <li>• Visit Pewsey Vale – promotional video</li> <li>• Wiltshire Police</li> <li>• Dorset and Wiltshire Fire and Rescue</li> </ul>	<b>7.10pm</b>
7	<p><b>Community Safety</b></p> <p>To receive a presentation from Lauren Clark, Watch Coordinator for Crime Prevention, about Neighbourhood Watch and the benefits of signing up and using Community Messaging.</p>	<b>7.20pm</b>
8	<p><b>Raizer Chair Project</b></p> <p>To receive an update from the Local Governor of South Western Ambulance Service on the Raizer Chair Project.</p>	<b>7.35pm</b>
9	<p><b>Update on the Working Groups and Projects</b> (<i>Pages 31 - 54</i>)</p> <ul style="list-style-type: none"> <li>• Local Youth Network – Cllr Jerry Kunkler</li> <li>• Health and Wellbeing – Cllr Stuart Wheeler</li> <li>• Community Area Transport Group – Cllr Jerry Kunkler</li> </ul>	<b>7.50pm</b>
10	<p><b>Community Area Grants</b> (<i>Pages 55 - 58</i>)</p> <p>To consider two applications for Community Area Grant funding, as follows:</p>	<b>8.00pm</b>

- **Applicant:** Shalbourne Village Hall Management Committee  
**Project Title:** Village Hall Updating and Improvement work - £2464
- **Applicant:** The Bouverie Hall  
**Project Title:** Male Toilet Refurbishment - £2500

To note an application for Community Area Grant funding, awarded under delegated authority:

- £100 for the holding of the Christmas lunch for those on their own

11 **Partner Updates Part 2** (*Pages 59 - 64*)

**8.15pm**

To receive any updates from partner organisations:

- Spotlight on the Parishes
- Healthwatch Wiltshire
- NHS Wiltshire Clinical Commissioning Group
- Pewsey Community Area Partnership
- Community Engagement Manager Update

12 **Urgent items**

Any other items of business which the Chairman agrees to consider as a matter of urgency.

13 **Future Meeting Dates and Close**

**8.30pm**

The next meeting of the Pewsey Area Board is scheduled for 20 January 2019, 7pm at Coronation Hall, East Grafton, Village Green.

# MINUTES

**Meeting:** PEWSEY AREA BOARD  
**Place:** Woodborough Club, Smithy Lane, Woodborough, SN9 5PL  
**Date:** 2 September 2019  
**Start Time:** 7.00 pm  
**Finish Time:** 8.00 pm

---

Please direct any enquiries on these minutes to:

Craig Player Democratic Services Officer, Tel: 01225 713191 or (e-mail) [craig.player@wiltshire.gov.uk](mailto:craig.player@wiltshire.gov.uk)

Papers available on the Council's website at [www.wiltshire.gov.uk](http://www.wiltshire.gov.uk)

---

## **In Attendance:**

### **Wiltshire Councillors**

Cllr Jerry Kunkler, Cllr Mark Connolly and Cllr Paul Oatway QPM

**Total in attendance: 32**

---

<u>Agenda Item No.</u>	<u>Summary of Issues Discussed and Decision</u>
58	<p><u>Welcome and Introductions</u></p> <p>The Chairman welcomed everyone to the meeting and introduced the Area Board Members and Council officers.</p>
59	<p><u>Apologies for Absence</u></p> <p>Apologies for absence had been received from Cllr Stuart Wheeler and Richard Rogers.</p> <p>Cllr Stuart Wheeler was substituted by Cllr Mark Connolly.</p>
60	<p><u>Minutes</u></p> <p>The minutes of the meeting held on 08 June 2019 were agreed as a correct record and signed by the Chairman.</p>
61	<p><u>Declarations of Interest</u></p> <p>There were no declarations of interest.</p>
62	<p><u>Chairman's Announcements</u></p> <p>The Chairman drew attention to the following written announcements available in the agenda pack:</p> <ul style="list-style-type: none"> <li>• Downland School Consultation</li> <li>• How Dementia Friendly is Wiltshire?</li> </ul>
63	<p><u>Partner Updates Part 1</u></p> <p>a) Wiltshire Police - the written report was noted:</p> <p>b) Wiltshire Fire and Rescue - the written report and following points were noted:</p> <ul style="list-style-type: none"> <li>• The What Three Words app, which gives three simple words for the communication of locations, can be an effective tool for the public to share their location with services when in an emergency.</li> </ul>
64	<p><u>Update on the Working Groups and Projects</u></p> <p>a) Health and Wellbeing Group – the following points were noted:</p> <ul style="list-style-type: none"> <li>• The draft version of the Assets Register for the Pewsey Area had</li> </ul>

	<p>been circulated. This is a short brochure sent to GPs to share what village services are available to their patients.</p> <ul style="list-style-type: none"> <li>• The Armchair Exercise Group will be held at the Bowls Club in weeks leading up to Christmas.</li> <li>• Bedwyn Walking Group was continuing to run successful activities.</li> </ul>
65	<p><u>Community Area Grants</u></p> <p>The Area Board considered five applications for Community Area Grant funding and three member-led initiatives for Youth funding.</p> <p>The Chairman invited a representative of the applicants the opportunity to give a brief overview of their project to the Area Board.</p> <p><b>Resolved</b></p> <ol style="list-style-type: none"> <li>1. To award Pewsey Rugby Club £1950 for the provision of a new mower.</li> <li>2. To award Burbage Village Hall £1800 for the provision of new doors.</li> <li>3. To award Easton Royal Village Hall £746 for the provision of new doors.</li> <li>4. To award SWAST Community First Responders £1500 for a raizer lifting chair.</li> <li>5. To award Open Blue Trust £6800 to provide a mobile community centre for young people in the Burbage and Upavon areas subject to relevant safeguarding checks.</li> <li>6. To award Mental Health Champions for Vale of Pewsey Schools £650 and to reassign £1000 from the 21st Century initiative for mental health support for young people.</li> <li>7. To award the Pewsey Parish Council £1500 for an ice rink during the Christmas period.</li> <li>8. To award Burbage and Easton Royal Cricket Club £1500 for outfield levelling.</li> </ol>
66	<p><u>Partner Updates Part 2</u></p> <p>a) HealthWatch - the written update was noted.</p> <p>b) NHS Wiltshire Clinical Commissioning Group (CCG) - the written update was noted.</p> <p>c) Pewsey Area Partnership (PCAP) – the following points were noted:</p> <ul style="list-style-type: none"> <li>• The tourism partnership was continuing to tick along and its promotional film on Pewsey had been viewed over 22,000 times.</li> <li>• It was working towards a Great Western Railway Community Fund bid for more visitor leaflets and the development of an app to show tourist where to visit in Pewsey.</li> <li>• Great Western Railway will to visit Bouverie Hall on 31st October to talk about the new timetable being launched in December and some</li> </ul>

	of issues reported by rail users in the last few weeks.
67	<p><u>Urgent items</u></p> <p>It was noted that the Woodborough End of Summer Spectacular would be held on Saturday 28th September.</p> <p>It was also noted that Pewsey and District Feast and Carnival would be held on 21st September 2019.</p>
68	<p><u>Future Meeting Dates and Close</u></p> <p>The next meeting of the Pewsey Area Board is scheduled for 11 November 2019, 7pm at Burbage Village Hall.</p>



## Chairman's Announcements

Subject:	New fly-tipping campaign: We're Targeting Fly-tippers
Web contact:	<a href="mailto:peter.white@wiltshire.gov.uk">peter.white@wiltshire.gov.uk</a>

Wiltshire Council has launched a new campaign reward campaign to prevent fly-tipping in the county.

**The We're Targeting Fly-tippers (WTF) campaign aims combat the scourge of fly-tipping by offering residents a reward of up to £200 in high street vouchers if they report information that leads to the successful prosecution of an offender or the payment of a Fixed Penalty Notice (FPN).**

If anyone has any information about fly-tipping in Wiltshire, they are requested to report it using the My Wiltshire app with as much information as possible. If this information leads to a successful prosecution or payment of a Fixed Penalty Notice, the person who reported it will earn a voucher of up to £200.

We want residents to provide information as possible, such as where the fly-tip is, the registration and make or model of the vehicle they saw, plus any description or photographs of the alleged fly-tippers. **However, it is essential that people do not attempt to confront anyone who is fly-tipping or put themselves in danger in any way. We also ask people not to try to rummage through or disturb the waste, as this could affect the scene and put people in danger.**

Fly-tipping costs Wiltshire Council more than £180,000 each year, it is unsightly and it is a danger to people, wildlife and the environment.

In Wiltshire, most fly-tip reports are of a commercial nature, where waste is cleared for a fee and then dumped to avoid lawful disposal costs. Penalties for offenders include an unlimited fine and/or five years' imprisonment; a £50,000 fine and/or 12 months' imprisonment; or a FPN of £400 if they are caught fly-tipping small-scale waste.

This page is intentionally left blank

WILTSHIRE POLICE

## CPT Area Briefing

Wiltshire East Community Policing Team

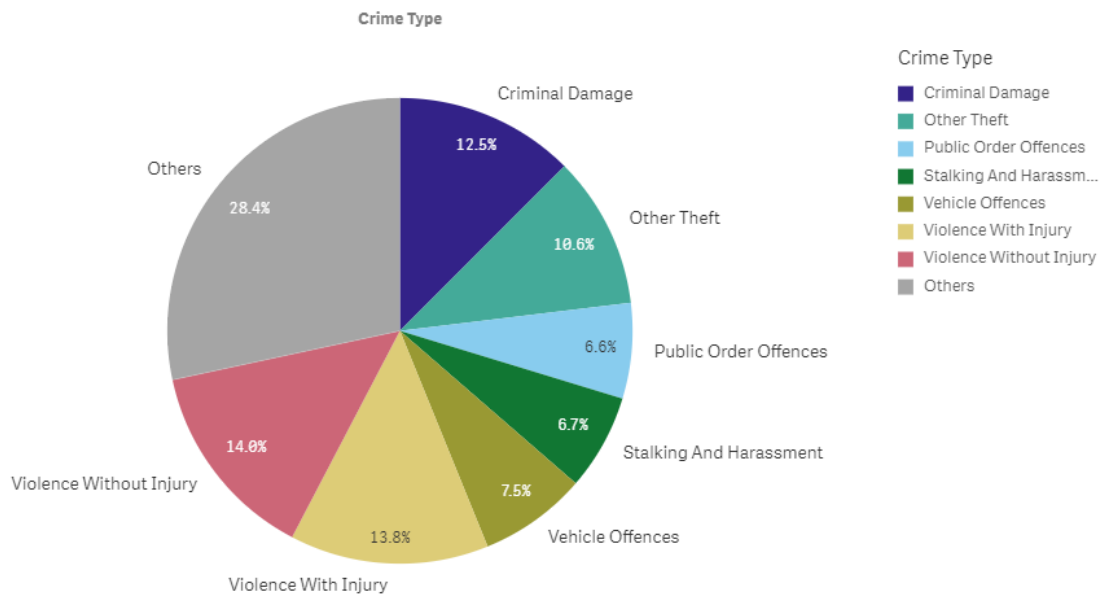


Proud to serve and protect our communities

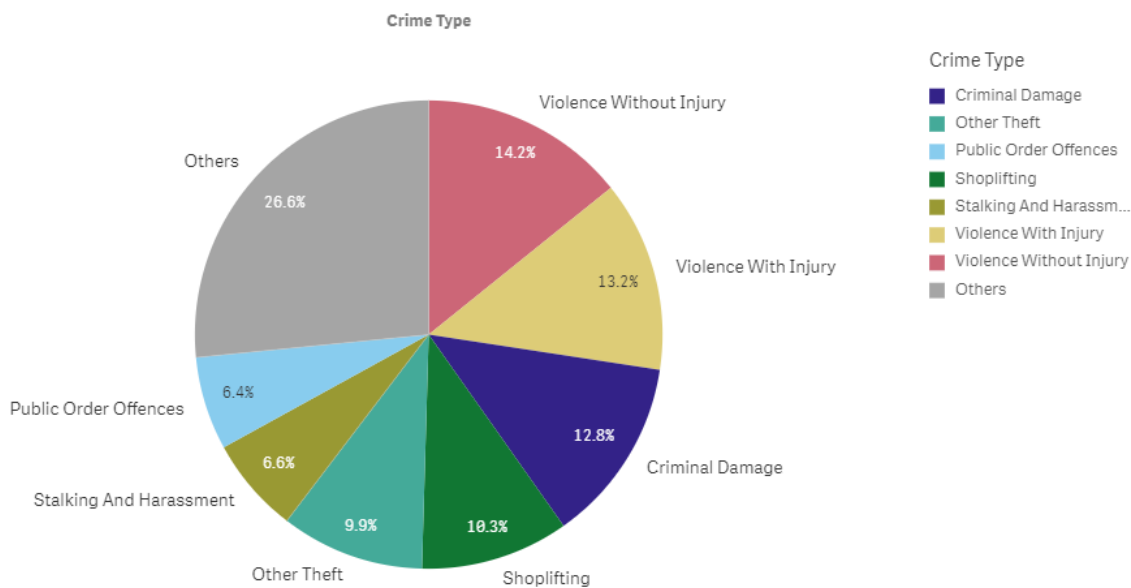
October 2019

### PERFORMANCE

Your Area - Five Highest Crime Groups (Previous 12 months)



Force Area - Five Highest Crime Groups (Previous 12 months)



Wiltshire East CPT - crime and incident demand for the 12 months to September 2019

WILTSHIRE POLICE

# CPT Area Briefing

Wiltshire East Community Policing Team



Proud to serve and protect our communities

October 2019

## Force-wide

- Wiltshire Police has had an increase in the volume of recorded crime by 1% in the 12 months to September 19 and continues to have one of the lowest crime rates in the country.
- Our service delivery remains consistently good.
- In September, we received 8,312 999 calls which we answered within 6 seconds on average and 12,474 CRIB calls which we answered within 2 minutes 08 seconds on average.
- In September, we also attended 1,344 emergency incidents within 17 minutes and 00 seconds on average.
- Wiltshire Police has seen a 17% reduction in vehicle crime and 21 per cent in residential burglaries in the 12 months to September 2019.
- The Crime Survey of England & Wales recently ranked Wiltshire as one of the top forces (78.3%) nationally for public confidence. It covers the 12 months to March 2019.  
The publication can be found here: [WWW.CRIMESURVEY.CO.UK](http://WWW.CRIMESURVEY.CO.UK)

For more information on Wiltshire Police's performance please visit:

PCC's Website - <https://www.wiltshire-pcc.gov.uk/article/1847/Performance>

HMICFRS Website - <https://www.justiceinspectorates.gov.uk/hmicfrs/police-forces/wiltshire/>

Police.uk - <https://www.police.uk/wiltshire>

WILTSHIRE POLICE

# CPT Area Briefing

Wiltshire East Community Policing Team

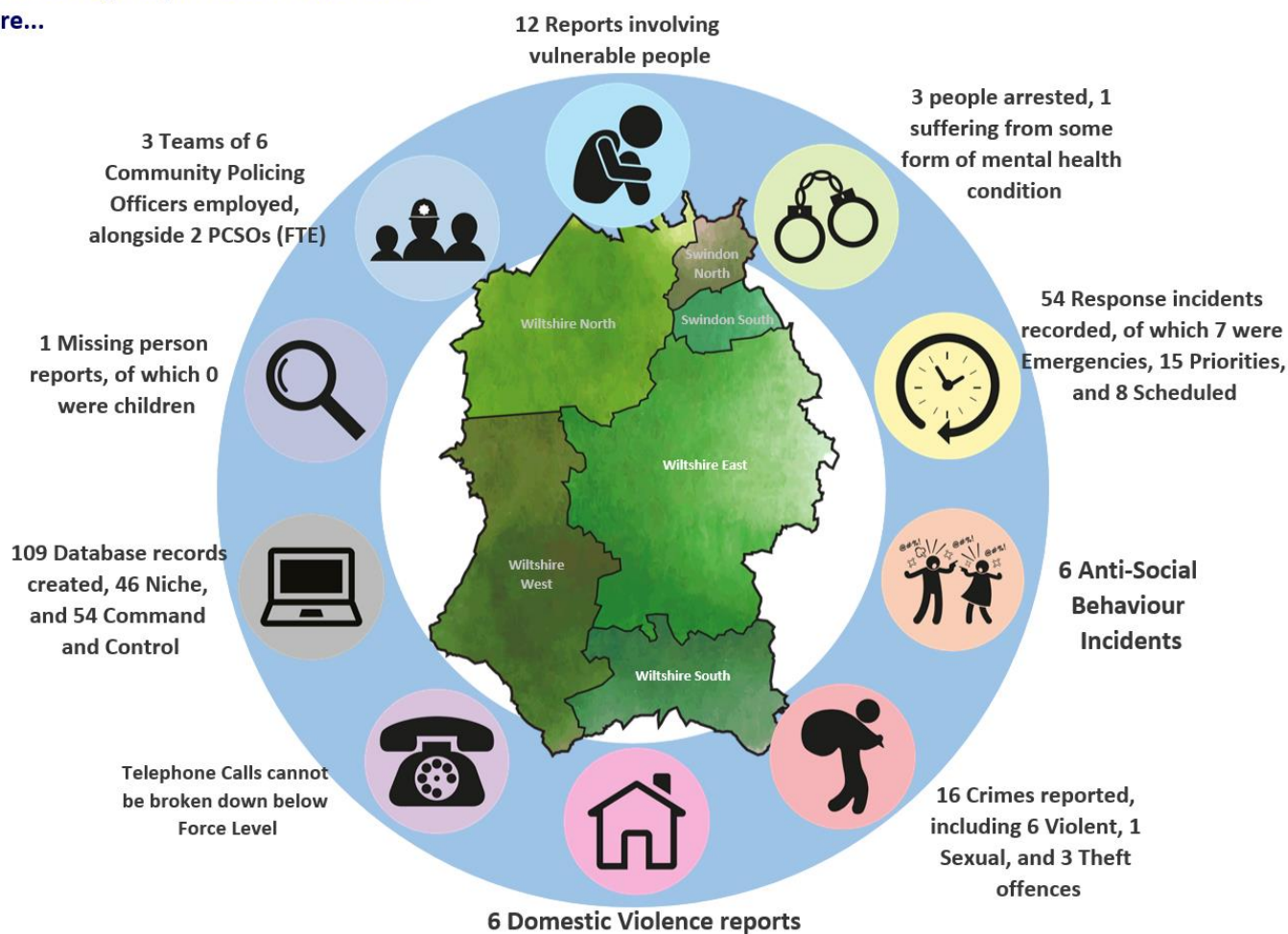


Proud to serve and protect our communities

October 2019

## Area specific

On an average day in Wiltshire East there were...



Wiltshire East CPT Demand Overview – 12 months to September 2019

### PEWSEY CRIME STATISTICS FROM 01/09/2019 – 21/10/2019:

- 9 REPORTS ASB
- 6 REPORTS OF BURGLARY
- 2 REPORTS OF DRUG OFFENCES
- 8 REPORTS OF THEFT
- 24 REPORTS OF VIOLENT CRIME
- 18 REPORTS OF CRIMINAL DAMAGE
- 4 REPORTS OF PUBLIC ORDER
- 9 REPORTS OF VEHICLE OFFENCES (Beauty Spot theft from motor vehicles)

WILTSHIRE POLICE

# CPT Area Briefing

Wiltshire East Community Policing Team



**Proud** to serve and **protect** our communities

October 2019



WILTSHIRE POLICE

# CPT Area Briefing

Wiltshire East Community Policing Team



Proud to serve and protect our communities

October 2019

## HIGH LEVEL CPT UPDATES:



**Pewsey Police**

Published by PC Dave McCalmont [?] · 4 October at 08:12 · 🌐

Officers from CPT Team 4 conducted speed checks in Easton Royal yesterday. Of 30+ vehicles checked, one has been reported for excess speed (42mph in a 30 mph limit), and several were given words of advice in relation to their speed in this area. Please be mindful of how fast you're driving. #speedawareness #slowdown #drivesafely



**Pewsey Police**

Published by James Robbins [?] · 7 September · 🌐

Speed checks this evening in Wilcot by SPS TURNER and PC HAMEL. #SafeEastCPT



WILTSHIRE POLICE

# CPT Area Briefing

Wiltshire East Community Policing Team



Proud to serve and protect our communities

October 2019



**Pewsey Police**

Published by Paul Whiteside [?] · 22 September at 22:35 · 🌐



Paul Whiteside ▸ Pewsey Notice Board

22 September at 22:27

PCSO Paul Whiteside was with other PC/PCSO patrolling the Pewsey Carnival on the 21s September. The event appeared to be a great success with residents from Pewsey and surrounding areas coming to enjoy the carnival spirit.



WILTSHIRE POLICE

# CPT Area Briefing

Wiltshire East Community Policing Team



**Proud** to serve and **protect** our communities

October 2019



## Devizes Police

Published by James Robbins [?] · 11 October at 22:22 · 🌐

Rural patrols this evening by PC STEELE and PCSO BRAITHWAITE as part of operation Appollo. Police visited Planks Farm shop and a number of churches in the area due to reports of lead thefts. (inc St Marys at Market Lavington) #SafeEastCPT

WILTSHIRE POLICE

# CPT Area Briefing

Wiltshire East Community Policing Team



Proud to serve and protect our communities

October 2019

## YOUR CPT – Wiltshire East



Acting Inspector Pete Foster



Sergeant Tracey Holloway

### Community Co-ordinators:



PC Emily Grigor (Marlborough and Pewsey)



PCSO Paul Whiteside

[Paul.Whiteside@Wiltshire.pnn.police.uk](mailto:Paul.Whiteside@Wiltshire.pnn.police.uk)

WILTSHIRE POLICE

# CPT Area Briefing

Wiltshire East Community Policing Team



**Proud** to serve and **protect** our communities

October 2019



PCSO Jon MILLS

[Jonathan.Mills@wiltshire.pnn.police.uk](mailto:Jonathan.Mills@wiltshire.pnn.police.uk)

You can find out more about Wiltshire East CPT, including news stories and contacts for local officers, on our website: [www.wiltshire.police.uk/WiltshireEast](http://www.wiltshire.police.uk/WiltshireEast)

You can also follow our work on our Facebook and Twitter pages.



WILTSHIRE POLICE

# CPT Area Briefing

Wiltshire East Community Policing Team



Proud to serve and protect our communities

October 2019

## LOCAL PRIORITIES

PRIORITIES FOR WILTSHIRE EAST CPT	UPDATE
<b>Priority 1: Anti Social behaviour</b>	
<p>Due to vehicles being used in an anti-social manner around the Pewsey area, in particular Olympian Road &amp; Vale Road, officers are conducting mobile patrols at various times of the day and night.</p>	<p>PCSO's and PC's are patrolling the area on foot and in vehicles with the help of our Special Ops colleagues (Firearms/dogs)</p>
<b>Priority 2: Rural Crime</b>	
<p>It is imperative that we maintain a high visible presence within our rural county. Albeit the weather is now turning we're still aiming to patrol our Beauty Spots and rural sites including churches. Due to their rural nature and number of visitors, they do unfortunately become a target of crime. These patrols are now including farm land by the permission of the land owners</p>	<p>Patrols are being conducted at all times of day and night, and we have increased these at locations such as churches and farms. We will often advertise these patrols on our social media pages to show the local community what we have been up to. We also took part in a national week of action from 06<sup>th</sup> October where we had an increase in dedicated staff for our rural communities.</p>

WILTSHIRE POLICE

# CPT Area Briefing

Wiltshire East Community Policing Team



Proud to serve and protect our communities

October 2019

## Priority 3: Community Speed Watch

Keeping our roads safe is extremely important within our area as we have several A Roads that pass through our County.

We will be receiving fortnightly updates from our Community Speed Watch Teams with specific areas to target. It is important that we work with the general public to identify unsafe road users within our county. We hope to show how hard we will be working to target the roads through our Social Media updates and cooperation with Community Speed Watch Schemes

Continued high visibility patrols combined with speed checks in the area. We will advertise some of these checks on our social media pages.

## Priority 4: Burglary

We have seen an increase in reports of both domestic and commercial burglaries within the East Sector.

Due to this patrols are being carried out at all times of day & night by officers.

The East sector is a large and very rural sector and we therefore encourage you to report any suspicious behaviour in your area.

Patrols are being conducted by officers and PCSO's. During November Wiltshire Police is running a winter burglary prevention campaign for which we will be taking part in additional activity.



WILTSHIRE POLICE

# CPT Area Briefing

Wiltshire East Community Policing Team



Proud to serve and protect our communities

October 2019

## HIGH LEVEL PCC UPDATES

- **Recruitment** - Police officer recruitment continues with more than 500 applications received so far since the campaign launched on 23 September. Wiltshire Police is accepting applications until Sunday 13 October.
- **Community work** - In September PCC Angus Macpherson awarded a total of £22,500 from the Police Property Act to projects across the county which make a difference in their communities. Beneficiaries include a drop-in service for homeless people, a 12-week personal development course for unemployed young people and a pilot project using photography to engage with young people at risk of offending or exploitation. Full details are available on our website.
- **Herbert Protocol** – The PCC was proud to join Wiltshire Police, Swindon Borough Council, healthcare partners, Swindon Carers Centre and the Alzheimer's Society at the launch of the Herbert Protocol last month. It comprises of a document in which carers, family and friends of vulnerable adults can fill out key details about the individual as a pre-emptive measure in case they later go missing. This will enable the police to start their initial enquiries sooner with the aim of finding the missing person safe and well.

## HIGH LEVEL FORCE UPDATES

- **County Lines** – The issue of gangs transporting Class A drugs from major cities such as London and Manchester into rural counties, is one which is attracting significant media attention. Here in Wiltshire we are raising awareness of the problem, and specifically the impact these crimes have on the wider community, as they are often linked to modern slavery and organised crime, with children and vulnerable adults being exploited. Please look out for local media coverage, or go to our website for more information.
- **Domestic abuse** – This month we are highlighting the work Wiltshire Police is doing to tackle domestic abuse, including educating the public about the support that is available for victims. This campaign will include a young mother, who has been the victim of domestic violence, speaking out about her story in the hope that she can encourage other victims to come forward and get support.
- **Rural crime** - During the beginning of October we are taking part in a national week of action targeting rural crime. Our work will include providing crime prevention advice and encouraging residents to report all incidents to the police, as well as having our Community Policing Teams and the Rural Crime Team out and about engaging with our rural communities.

WILTSHIRE POLICE

# CPT Area Briefing

Wiltshire East Community Policing Team



**Proud** to serve and **protect** our communities

October 2019

## GET INVOLVED

- You can keep up to date with the latest news in your area by signing up to our Community Messaging service – [www.wiltsmessaging.co.uk](http://www.wiltsmessaging.co.uk)
- You can follow your CPT on social media <https://www.wiltshire.police.uk/Followus>
- More information on your CPT area can be found here: [www.wiltshire.police.uk](http://www.wiltshire.police.uk) and here [www.wiltshire-pcc.gov.uk](http://www.wiltshire-pcc.gov.uk)

## FEEDBACK/ACTIONS TAKEN

This page is intentionally left blank





## DORSET & WILTSHIRE FIRE & RESCUE SERVICE

### WILTSHIRE AREA BOARD REPORT

#### Community Safety Plan

DWFRS Community Safety Plan can be found on the DWFRS website;  
<http://www.dwfire.org.uk/community-safety-plan/>

#### Prevention

We are committed to making a real difference to the lives of people in Dorset and Wiltshire. Our aim is to reduce the level of risk and harm to our communities from fire, targeting those most at risk. We do this primarily through our Safe and Well visits.

A Safe and Well visit is **FREE** and normally lasts about one hour covering topics such as:

- Using electricity safely
- Cooking safely
- Making an escape plan
- What to do if there is a fire
- Keeping children safe
- Good practice – night time routine and other points relevant to you
- Identifying and discussing any further support the occupier may need

Are you or anyone you know: -

- Over the age of 65?
- Need a smoke detector?
- Have a long-term health condition?
- Suffer from poor hearing or sight loss?
- Would you struggle to escape in the event of a fire?

If you can answer yes to more than one of these questions, then please call us on 0800 038 2323 or visit <https://www.dwfire.org.uk/safety/safe-and-well-visits/>



## **Protection**

On-going interaction by Protection Team members with Local Authorities, Private landlords and tenants regarding fire safety-related matters: external cladding systems; fire detection and warning systems; fire resisting doors (& self-closers); combustibility/fire resistance of construction materials; commercial and residential sprinklers systems and water-mist suppression systems

### **General Enquiries**

If you have a general fire safety enquiry regarding commercial property, please email [fire.safety@dwfire.org.uk](mailto:fire.safety@dwfire.org.uk) and the Fire Safety Team will respond in office hours.

### **Fire Safety Complaint**

If you wish to tell us about fire safety risks in commercial premises, such as locked or blocked fire exits, you have three options:

- You can email the fire safety department at [enforcement@dwfire.org.uk](mailto:enforcement@dwfire.org.uk)
- Call 01722 69 1717 during office hours (9am-5pm).
- Call our Service Control Centre on 0306 799 0019 out of office hours (5pm-9am)

## **On Call Recruitment**

Have you always wondered if you could join the fire service, but haven't had the opportunity to find out more? Have you found yourself seeking your next challenge, keen to give back to the local community or wanting to learn new skills including leadership and teamwork? Then becoming an on-call firefighter is for you.

As a paid position, on-call firefighters commit anywhere between 40 to 120 hours per week, during which time they must be able to respond to the station immediately.

Many have 'normal' jobs during the day, then upon their return home make themselves available overnight or during the weekends. Some of our crew respond from their workplaces during the day, and we are very grateful to their employers for releasing them to perform their vital duties.

Anyone over 18 years old can apply (although you can also apply once you are 17½) you must be able to respond and attend the fire station within 5-8 minutes, you have a good standard of physical fitness (i.e. you are generally active), and you must have the right to work in the UK.

Further information on becoming an On Call Firefighter can be found at [www.dwfire.org.uk/working-for-us/on-call-firefighters/](http://www.dwfire.org.uk/working-for-us/on-call-firefighters/) or should you have any questions, you can call **01722 691444**.



## Recent News & Events

### Get Ready for Winter

For a full range of information and advice on how to stay safe, warm and healthy over the winter including: -

- Winter Safety in the Home
- Driving in Adverse Conditions
- Winter Driving Checklist



Please visit our website page [Get Ready for Winter](#)

### Thatched Properties



The counties of Dorset and Wiltshire have thousands of thatched homes – although there is no increased risk of fire within thatched properties, the impact of a fire is far greater.

Thatch fires are typically attended by in excess of 50 firefighters, at least eight appliances and often for over 24 hours. The National Society of Master Thatchers estimate that the average cost of a thatch fire is in excess of £45,000.

A range of fire prevention tips can be found in our free downloadable advice leaflet [Your Thatched Home](#).

### Countywide On-Call Firefighter Recruitment Campaign Set to Launch



Firefighters across Wiltshire are appealing for members of the public to join them this week with the launch of their on-call recruitment campaign.

Dorset & Wiltshire Fire and Rescue Service needs new on-call recruits to provide fire cover at locations across Wiltshire. Contracted hours can vary, but on-call personnel usually make themselves available for between 40 and 120 hours per week. Between them, each fire station team will provide cover for weekdays, evenings, nights and weekends.

Full details of the campaign can be viewed [here](#).



## Demand

Total Fire Calls for Pewsey Fire Station for period 01.09.19 to 31.10.19: -

Category	Total Incidents
No. of False Alarms	13
No. of Fires	8
No. of Road Traffic Collisions and other Emergencies	5
<b>Total</b>	<b>26</b>

## Local Incidents of Note

01.09.19 – Fire, Hills Waste, Compton Bassett







## 20.09.19 – RTC, A338 Collingbourne Kingston

### Marlborough Police

September 21 ·

A motorcyclist sadly died in a collision on the A338 at Collingbourne Kingston yesterday.

The collision occurred at approximately 6.30pm on Friday 20 September.

A motorcyclist was travelling southbound along the A338 and a Peugeot Partner van was travelling northbound when the collision took place.

The motorcyclist, a man aged in his 50s from the Marlborough area, sadly died at the scene.

Our thoughts are with his family at this time and they are being supported by a specially trained family liaison officer.

The driver of the van was taken to Salisbury District Hospital with minor injuries.

The road was closed for approximately six hours to allow for collision investigators to attend the scene.

Anyone who witnessed the collision should call 101 and quote reference number 54190093675.

## 22.09.19 – Pewsey Carnival

## 30.09.19 – RTC, Collingbourne





**DORSET & WILTSHIRE  
FIRE AND RESCUE**

30.09.19 – District exercise, Tottenham House, Savernake

03.10.19 – Fire, 8 appliances, Tidworth

29.10.19 – Recruitment evening

**Dave Adamson  
Station Manager  
Email: [dave.adamson@dwfire.org.uk](mailto:dave.adamson@dwfire.org.uk)  
Tel:07734483892**

**PEWSEY VALE HEALTH & WELLBEING FORUM**

Minutes of the meeting on October 14<sup>th</sup> 2019 4-30 pm at Parish Meeting Room, Pewsey

**MINUTES**

**Attending:** Dawn Wilson (PCAP), Richard Rodgers (Wilts Council CEM), Susie Brew (PCAP), Fanny Middleton (Alzheimer's Support), Pauline Dark (Churches), Cllr Stuart Wheeler (Pewsey Area Board), Sylvie Clayden (Occupational Therapist supporting Dementia), Anne Hogg (Pewsey PC), Nell Light (Home Instead), Lesley Green (Shalbourne Connect)

**Apologies:** Hilary Hollingsworth (Churches), Marilyn Hunt (Pewsey PC), Judy Haynes (Grt Bedwyn Footpaths), and Matt Pearson (Wilts Council Sports Development Officer – North)

1. **Welcome and introductions**-see above. Stuart welcomed everyone.
2. **Previous minutes**- *Resolved* that these be accepted.
3. **Update on actions /matters arising** – Most actions completed or ongoing. Specific discussion took place around
  - i. Asset Mapping – A first version of this information in a booklet was made available for Sylvie Clayden to share with the surgeries when she visited them to promote the Armchair Exercise Project – see below. ACTION: It will be reviewed regularly to keep it up to date by PCAP and shared via website. Printed copies will be made available periodically.
  - ii. Armchair Exercise–Awarded £1600. A pilot of 6 sessions from Oct to Dec, are already underway in the Bowls Club in Pewsey on alternating Fridays. The initial session had 10 attending aged from 48 to 80 yrs. The venue is excellent and well received. The group needs 20 to be sustainable at present. The funds will help secure the second round of sessions from the New Year, but by then the group should be charging £5 a head to fund itself going forward into the Spring. Discretionary waiver of fees is for the support worker to decide. The staff have been DBS checked. Those attending have been assessed for it being a suitable level of activity. The local surgery is using social prescription to send people to join in. Sylvie broke the ice by visiting some in their homes to do the health check and support them to come along. Sylvie reported that the new social navigator at the surgery, Claire was working with her. (Mary Soellner is doing the same role in Grt Bedwyn.) Age UK have expressed an interest in running something similar. Dawn suggested perhaps they could set up a group in Upavon which has the population and venues. Alternatively, Burbage might lend itself to a group although there is a lot of other activities going on there.
  - iii. Mental Health Training – Following securing funds of £1600 from the Chair (21<sup>st</sup> Century Funds not used from the LYN plus a top up of £600 from the LYN) this one day training in Mental Health First Aid took place on Oct 9<sup>th</sup> at Pewsey Vale School with 8 attending. Sadly those staff from Oare and Pewsey primary schools due to attend didn't due to sickness. All parties were happy with the day. Wiltshire Mind offers a 2 day Youth course that the School were interested in. Dawn will wait for them to identify staff, dates and venue before seeking the £4,000 funds for 16 places. The school sad they could offer some funding towards it.
4. **Grant Applications**- £4,500 remaining
  - i. NOTE: Late addition post this meeting -The Christmas lunch group (Brian Hollands) in Pewsey received a £100 contribution for 2019. He has asked for a further £100 to top up funds for 2019 – November Area Board will review.
  - ii. Adjustable Chairs for Bouverie Hall and Shalbourne Connect, that host a number of groups for older and vulnerable people for chairs suitable for those with hip replacements or other

issues with low seats. ACTION Sylvie to follow up please or get a quote. NOTE: this quote has been circulated to parishes so that PCAP can seek the funding for Chairs as one collective bid.

## 5. Update on funded projects-

- i. Great Bedwyn Walks Group –The walks remain very successful. The local allotment groups had donated £713 towards the group’s costs. This will be used for reprinting their walking leaflets. [Bedwynhealthwalks@gmail.com](mailto:Bedwynhealthwalks@gmail.com) Facebook page – Bedwyn Health Walks, @bedwynhealthwalks and Judy Haynes [bedwynfootpathsgroup@gmail.com](mailto:bedwynfootpathsgroup@gmail.com) [www.bedwynfootpathsgroup.org.uk](http://www.bedwynfootpathsgroup.org.uk)
- ii. Pewsey Vale Tourism Partnership Walking Leaflets for the Vale – Susie reported that the 20 walking leaflets are now complete. They are available in Print and online. Tidworth have already begun working on their complementary leaflets. Amesbury and Marlborough are also interested. Longer term funds for reprinting sufficient for the next 3 years have been applied for via the GWR Communities Fund along with developing an app. A suggestion for accessible or guided walks for Dementia Week was put forward. The Wilcot circular walk lends itself to that.

6. **Marketing (Forum/Grants/Older Peoples Champion)** – the editorial of around 150 words is available to help raise awareness of the group and funding available.

## 7. Youth Provision

- I. Sylvie expressed her concern at the lack of facilities for older teens. The older teens do not want activities, just somewhere safe to hang out preferably with Wifi and access to soft drinks and a toilet. Dawn reported that Pewsey Football Club had considered opening on a Friday Night for this purpose, but had not heard anymore.
- II. Sylvie has an idea for a project for young people to design and produce seating for bus-stops in Pewsey. She will develop this further and report back.
- III. Wheeled Sports – Ann updated the group that this had not been shelved completely. The Parish Council were investigating 3 sites in the Village. Broomcroft Rd Play Area, a parish owned site with a tenant and another in private hands.
- IV. A final suggestion for young people was to develop a running circuit around Pewsey. The LYN is investigating holding activities days in Pewsey and will hold a meeting to discuss ideas.

Next meeting will be late Jan /Feb – Susie will Doodle times and dates. Venue - Pewsey Parish Meeting Room?

**Future dates will be published on the website – [www.pewseycap.org.uk/events](http://www.pewseycap.org.uk/events)**

**Thank you to all who attended and gave up their time.**

**Contact: Susie Brew – PCAP Coordinator [pcap@hotmail.co.uk](mailto:pcap@hotmail.co.uk) or [Dawnwilson917@yahoo.com](mailto:Dawnwilson917@yahoo.com)**

Signed \_\_\_\_\_ Date \_\_\_\_\_  
Cllr Stuart Wheeler (Chair)



COMMUNITY AREA TRANSPORT GROUP ACTION / NOTES LOG

	Item	Update	Actions and recommendations	Who
	<b>Pewsey CATG - Date of meeting: 16<sup>th</sup> October 2019</b>			
<b>1.</b>	<b>Attendees and apologies</b>			
Page 33	Present:	J.Kunkler, M. Stansby, P. Deck, C. Gale, D. Wilson, C.Hollinsworth, M. Lockhart, P. Mills, J. Brewin, M. Hislop, P. Oatway, J. Tighe, S. Colling, M. Maclean, T. Eyles, R. Rogers.	Area Board to note.	Cllr Kunkler
	Apologies:	R. Nethercliffe, A. Flack, D. Proto, S. Drinkwater.  It was noted that Highways Engineer R. Dobson has not attended for some time and members considered, as it is hard to communicate with him via other means it is essential that he attends meetings.	Area Highways Manager to note	M. Beaven
<b>2.</b>	<b>Notes of last meeting</b>			
		The notes of the previous CATG meeting held were agreed at the Pewsey Area Board meeting on 8 <sup>th</sup> July 2019, passing all recommendations.	CATG to note	Cllr Kunkler
<b>3.</b>	<b>Financial Position</b>			
		The current balance, less previous commitments and expenditure stands at minus £5,837.98 (see Appendix 1).  This figure is pending on the successful outcome of 3 bids submitted for Substantive Highways Schemes funding.	Area Board to note.	Cllr Kunkler

COMMUNITY AREA TRANSPORT GROUP ACTION / NOTES LOG

		Of the three bids submitted Chirton and Rushall were successful but N. Newton Phase 2 was not.		
<b>4.</b>	<b>Top 5 Priority Schemes</b>			
a)	<b>Issue 3676</b>  North Newton Footway Improvements Phase 1	Ringway are to undertake some trial hole digs in October.  BT work on the chamber is to take place ahead of the main build. BT have stalled on this and so the main construction work has had to be put back to March next year.	Area Board to note.  Highways to chase BT	Cllr Kunkler  Highways
b)	<b>Issue 72 &amp; 3718</b>  Pedestrian access to Pewsey Rail Station	Signs installed – awaiting final account.  Highways to invoice PC	Area Board to note.  Highways to chase final account	Cllr Kunkler  Highways
c)	<b>Issue 91</b>  Rushall Elm Row – new footway from Church Lane to Bus Stop	Agreement on method of construction has been agreed with land owner.  The estimate to undertake the land retention work, construct the new footway and temporary traffic management stands at £55K. CATG and PC have both committed £5K.  A bid for substantive funds had been submitted for £45K and was successful.	Area Board to note.  Highways to continue with off-site work	Cllr Kunkler  Highways
d)	<b>Issue 5563</b>  Burbage Taskers Lane, Eastcourt Road, Eastcourt, Suthmere Drive and Ailesbury Way – request for 20 mph speed restriction	Objections to the proposal have been considered by the Cabinet Member for Highways. The decision is to proceed as advertised without changes.  Highways are preparing a construction pack to be issued to Ringway. A drawing showing indicative positions for the signs and carriageway markings is included as Appendix 2.	Area Board to note.  Highways to place order with contractor.	Cllr Kunkler  Highways

## COMMUNITY AREA TRANSPORT GROUP ACTION / NOTES LOG

		The new speed limit should come into force before the end of the calendar year, with all signs being in place.		
e)	<b>Issue 3723</b>  Woodborough – request for footpath provision on C261	The footway is substantially complete with only minor finishing work to be addressed.  Approximately 1% of the work to be completed.	Area Board to note.  Highways to monitor Ringway	Cllr Kunkler  Highways
<b>5.</b>	<b>Other Priority schemes</b>			
Page 35	<b>Issue 5998</b>  C351 Rushall Pewsey Road – request to consider traffic calming measures	A feasibility study was presented at the previous meeting and referred to the PC to consider the options.  PC wish to consider this issue in conjunction with issue 5999, see below.	Area Board to note	Cllr Kunkler
b)	<b>Issue 5567</b>  Chirton A342 – request for footway outside of former public house Wiltshire Yeomen	The estimate to undertake construction of the new footway and temporary traffic management stands at £21,950. CATG and PC have both committed £4,500.  A bid for substantive funds had been submitted for £12,950 and was successful.  PC to confirm funding in place before work commences.	Area Board to note.  PC to inform CATG	Cllr Kunkler  PC
c)	<b>Issue 6672</b>  Pewsey Ashton Close to Goddard Road – speeding cyclists and mobility scooters using Cinder Path	It was agreed at the last meeting that one pair of barriers be installed and the PC confirmed their contribution of £157 (20%) leaving £628 from CATG.  The barriers were installed but unfortunately were ripped out of the ground by persons unknown that same day. These have since been reinstated but at an additional cost.	Area Board to note	Cllr Kunkler

COMMUNITY AREA TRANSPORT GROUP ACTION / NOTES LOG

		<p>The total for the work undertaken now stands at £1022.30 and contributions need to be agreed to cover the additional charge of £237.3.</p> <p>Installation specification to be checked to confirm initial installation was done correctly. Costs to be apportioned accordingly.</p>	Highways to investigate.	Highways
Page 36	<p><b>Issue 6851</b></p> <p>Pewsey Swan Road – request for a pedestrian crossing by Manor Court</p>	<p>It was agreed at the last meeting to install one warning sign to face in-bound traffic.</p> <p>Sign installed – awaiting final account.</p> <p>Highways to invoice PC</p>	<p>Area Board to note.</p> <p>Highways to chase final account</p>	<p>Cllr Kunkler</p> <p>Highways</p>
	<p>e)</p> <p><b>Issue 5919</b></p> <p>C192 The Warren Savernake Road – speeding concerns</p>	<p>Issue submitted 06/12/17</p> <p>PC happy to pursue two pairs of signs and gates. PC agreed to fund total cost.</p> <p>An Engineer has now been assigned to this project. Work is to commence shortly to develop a proposal for consideration.</p>	Area Board to note.	Cllr Kunkler
f)	<p><b>Issue 6915</b></p> <p>North Newnton – request for Phase 2 of Footway project.</p>	<p>Issue submitted 02/01/19</p> <p>The estimate to undertake construction of Phase 2 of the new footway and temporary traffic management stands at £82,200.55. CATG and PC have both committed £5,000.</p> <p>A bid for substantive funds had been submitted for £72,200.55 but was not successful. A revised bid is to be submitted next year due to redevelopment of existing garage site.</p>	<p>Area Board to note</p> <p>Highways to work with PC to consider options.</p>	<p>Cllr Kunkler</p> <p>Highways</p>

COMMUNITY AREA TRANSPORT GROUP ACTION / NOTES LOG

g)	<p><b>Issue 7060</b></p> <p>A338 East Grafton – request for traffic management (calming) measures</p>	<p>Issue submitted on 05/03/19</p> <p>A scheme has been developed and has been approved by the PC. This is to be funded centrally by Highways with contributions agreed with the PC and CATG. Details of the proposals are shown on drawings included as Appendices 3A, 3B and 3C.</p> <p>Village gates can also be considered here in the new financial year and these can be installed at a cost starting from approximately £1600 per pair.</p>	<p>Area Board to note.</p> <p>Highways to arrange installation.</p> <p>New request for gates to be submitted by PC.</p>	<p>Cllr Kunkler</p> <p>Highways</p> <p>PC</p>
6.	<p><b>Ongoing / New Requests &amp; Issues</b></p>			
a)	<p><b>Issue 5281</b></p> <p>A345 Manningford – request for pedestrian warning signs</p>	<p>Issue submitted 06/04/17</p> <p>PC and Highways have met on site to discuss options. PC to negotiate with occupants in a bid to give up some land for a footpath.</p> <p>No PC representative present. Highways asked to cost for two Pedestrians in road warning signs.</p>	<p>Area Board to note.</p> <p>Highways to provide estimate.</p> <p>PC requested to reply by letter or email on the subject of the footpath if they cannot attend the next meeting.</p>	<p>Cllr Kunkler</p> <p>Highways</p> <p>PC</p>
b)	<p><b>Issue 5999</b></p> <p>C351 Rushall Pewsey Road –</p>	<p>Issue submitted on 11/01/18</p> <p>A ball park estimate for a freight movement study is £10,000.</p>	<p>Area Board to note</p>	<p>Cllrs Oatway, Kunkler and Gale</p>

COMMUNITY AREA TRANSPORT GROUP ACTION / NOTES LOG

	request for study into volume of traffic using this route.	<p>The Cabinet Member has not yet been invited to speak at the Area Board on this subject as there has been no policy discussions concerning Freight Strategy.</p> <p>Cllrs Oatway, Kunkler and Gale to button hole Cllr Wayman at next Cabinet meeting to discuss this issue and issue 5998 and to report back to next CATG meeting</p>		
Page 38	<p><b>Issue 6374 &amp; 6541</b></p> <p>Upavon – repositioning of No Entry Signs</p>	<p>Issues submitted on 08/06/18 &amp; 31/07/18</p> <p>Highways have installed “AHEAD ONLY” road markings. PC have arranged for overhanging vegetation to be cleared from Give Way sign.</p> <p>It was agreed that this issue be re-assessed once development of the old garage has been completed but the PC has now requested that the sign-lights be changed to LED units.</p> <p>To be reconsidered once new buildings are completed.</p>	Area Board to note	<b>Cllr Kunkler</b>
d)	<p><b>Issue 6492</b></p> <p>Burbage A338 junction with Eastcourt Road – Speeding concerns</p>	<p>Issue submitted on 15/07/18</p> <p>It was agreed to keep this issue live to see the effects of the new 20 mph limit.</p> <p>No further action at this meeting</p>	Area Board to note	<b>Cllr Kunkler</b>

COMMUNITY AREA TRANSPORT GROUP ACTION / NOTES LOG

Page 39	e)	<b>Issue 6827</b>  C38 Woodborough – request for metro counts to assess the impact of 20 mph Zone.	<p>Issue submitted on 13/11/18</p> <p>3 counts have been taken.</p> <p>Site MC 1 C38 between rail bridge and 20 limit (40 mph limit) Site MC 3 C261 East of The Sands (20 mph limit) Site MC 4 C38 The Sands (20 mph limit)</p> <p>Results (before &amp; after 20 limit implemented) MC1 before: 85<sup>th</sup> percentile = 34 mph Mean = 29.4 mph MC1 after: 85<sup>th</sup> percentile = 35.1 mph Mean = 29.8 mph MC3 before: 85<sup>th</sup> percentile = 21.7 mph Mean = 17.9 mph MC3 after: 85<sup>th</sup> percentile = 33.4 mph Mean = 27.6 mph MC4 before: 85<sup>th</sup> percentile = 37.1 mph Mean = 31.9 mph MC4 after: 85<sup>th</sup> percentile = 34.0 mph Mean = 27.9 mph</p> <p>The latest results taken at site MC3 appear to be distorted and a further count has been requested for this location.</p> <p>Await corrected results</p>	Area Board to note	Cllr Kunkler
	f)	<b>Issue 6879</b>  Shalbourne – safety concerns at the pedestrian access to village hall	<p>Issue submitted on 10/12/18</p> <p>Highways have refreshed the hatched road markings and the PC are content with the situation and request no further action at this time.</p>	To recommend to the Area Board that this Issue be closed.	Cllr Kunkler
	g)	<b>Issue 7005</b>  Rushall – request for bollards on bend outside of the school	<p>Issue submitted on 06/02/19</p> <p>Highways suggested installing 10 bollards costing approximately £200 each or anti-ram bollards at approximately £500 each.</p>	<p>Area Board to note.</p> <p>Highways to investigate</p>	<p>Cllr Kunkler</p> <p>Highways</p>

COMMUNITY AREA TRANSPORT GROUP ACTION / NOTES LOG

		Update from PC: Highways to prepare a drawing in line with the PC's estimate for 8 x £200 bollards.		
h)	<b>Issue 7063</b>  Great Bedwyn – request for access protection markings to enable access for local bus services	Issue submitted on 05/03/19  Parking at various locations are causing access issues. Highways still awaiting contact from PC to arrange a site meeting.  No contact from Bedwyn before or at the meeting.	Cllr Kunkler to discuss with Cllr Wheeler.	Cllr Kunkler
Page 40	<b>Issue 6832</b>  C21 Fair Mile – request for 2 x Deer warning signs	Issue submitted to Tidworth Area Board, March 2019  This Issue spans the boundary of Pewsey and Tidworth areas. Tidworth are willing to support this and have set aside up to £400 towards a sign on their patch. A similar commitment is needed from Pewsey. Grafton PC considered this but were unable to commit due to other priorities.  Highways allocated funding for the remainder and the signs have now been installed. An Issue of visibility with one of the signs has been raised which Highways are investigating.	Area Board to note	Cllr Kunkler  Highways
	j)	<b>Issue 10-19-3</b>  A338 Shalbourne - safety concerns at junctions of Burr Lane (Carvers Hill) and Mill Lane	New Issue submitted by Shalbourne PC on 10/08/19  Request for speed limit review over this length or improved warning signs.  Personal Injury Collision data for most recent 6 year period up to 31/12/18 shows: at Burr Lane 1 slight involving vehicle pulling out colliding with vehicle heading SW on A338 and at Mill Lane 1 slight involving vehicle turning left from A338 and losing control (single vehicle incident).	Area Board to note  Highways to consider signing provisions and report back.



COMMUNITY AREA TRANSPORT GROUP ACTION / NOTES LOG

k)	<p><b>Issue 10-19-4</b></p> <p>Stanton St Bernard – Request for “Passing Places” signs.</p>	<p>New Issue submitted by Stanton St Bernard PC on 01/08/19</p> <p>There are two lay-bys in the village for cars to pull into to allow other vehicles to pass but these are frequently blocked by parked cars.</p>	<p>Area Board to note</p> <p>Highways to identify costs to identify passing places</p>	<p>Cllr Kunkler</p> <p>Highways</p>
l)	<p><b>Issue 10-19-5</b></p> <p>Hilcott – Speeding concerns / request for Speed Limit Review</p>	<p>New Issue submitted by North Newnton PC on 01/10/19</p> <p>Parish has received a petition with 31 signatures representing all houses in Hilcott requesting that the speed limit be reduced to 30 mph.</p> <p>A Traffic Survey has been ordered with results awaited.</p>	<p>Area board to note.</p> <p>PC to forward results of survey when available.</p>	<p>Cllr Kunkler</p> <p>PC</p>
7.	<p><b>Other items</b></p>			
a)	<p>Pavement and Footway Improvement Scheme</p>	<p>Requests to be completed are at Burbage and Rushall.</p> <p>This is a matter for the Highway Engineer who was not available to attend to update the group</p>	<p>Area Board to note</p> <p>Highways Engineer to update PCs</p>	<p>Cllr Kunkler</p> <p>Highways</p>

COMMUNITY AREA TRANSPORT GROUP ACTION / NOTES LOG

Page 42	b)	<p>Advance warning of Pewsey Rail Bridge for HGVs northbound on A345</p>	<p>Highways have been tasked with looking at warning signs to indicate the restricted height at Pewsey Rail Bridge.</p> <p>Vehicles headed for Marlborough from the A303 are directed from the Trunk Road via the A338 / A346 although it is acknowledged that the A345 is also used.</p> <p>Whilst there is signing in place at Pewsey to route over-height vehicles via Wilcot Road &amp; Vale Road, there are no signs placed further afield.</p> <p>Ideally, over-height vehicles should be re-routed back to the A303 and signs for this purpose should be placed on approach to Woodhenge roundabout. For those who join this route further north, the next best alternative route would be via the A342, turning eastbound at Upavon to pick up the A338 at Leckford Crossroads.</p>	<p>Area Board to note</p> <p>Highways to pursue with signing scheme to warn vehicles of the low bridge at Pewsey.</p>	<p>Cllr Kunkler</p> <p>Highways</p>
	c)	<p>LED Lighting Project</p>	<p>The £12 million two-year project to replace the Council's aging street lighting with modern energy efficiency LED lights is starting in October 2019. There are over 40,000 lights to be converted.</p> <p>A dedicated section has been set up on our website to cover this project and is available to view from the Highways Improvement page.</p> <p><a href="http://www.wiltshire.gov.uk/highways-improvements">http://www.wiltshire.gov.uk/highways-improvements</a></p> <p>Noted that LED lighting is more directional and can be dimmed.</p>	<p>All to note.</p>	<p>Cllr Kunkler</p>

## COMMUNITY AREA TRANSPORT GROUP ACTION / NOTES LOG

Page 43	<p>c) Method of requesting Highway Improvement Measures and requesting Traffic Surveys (metro counts)</p>	<p>Please note the latest email address for Towns and Parish Councils to forward requests for Highways Improvement measures:</p> <p><a href="mailto:CATGRequests@wiltshire.gov.uk">CATGRequests@wiltshire.gov.uk</a></p> <p>Requests for Traffic Surveys should continue to be sent to:</p> <p><a href="mailto:roadsafetydriving@wiltshire.gov.uk">roadsafetydriving@wiltshire.gov.uk</a></p> <p>The relevant forms are available to download from the Area Board webpage:</p> <p><a href="http://www.wiltshire.gov.uk/council-democracy-area-boards">http://www.wiltshire.gov.uk/council-democracy-area-boards</a></p>	<p>All Parish Clerks to note.</p>	<p>PCs</p>
8.	<p><b>Date of Next Meeting: 5<sup>th</sup> February 2020, Pewsey Parish Council Office, at 14:00 hrs</b></p>			

### Pewsey Community Area Transport Group

#### Highways Officer – Mark Stansby

#### 1. Environmental & Community Implications

1.1. Environmental and community implications were considered by the CATG during their deliberations. The funding of projects will contribute to the continuance and/or improvement of environmental, social and community wellbeing in the community area, the extent and specifics of which will be dependent upon the individual project.

#### 2. Financial Implications

2.1. All decisions must fall within the Highways funding allocated to Pewsey Area Board.

## COMMUNITY AREA TRANSPORT GROUP ACTION / NOTES LOG

If funding is allocated in line with CATG recommendations outlined in this report, and all relevant 3<sup>rd</sup> party contributions are confirmed, Pewsey Area Board will have a remaining Highways funding balance of **minus £5,837.98**. *However, it should be noted that no expenditure will be incurred on the projects at Chirton or Rushall (Elm Row) during the current financial year.*

### 3. Legal Implications

3.1. There are no specific legal implications related to this report.

### 4. HR Implications

4.1. There are no specific HR implications related to this report.

### 5. Equality and Inclusion Implications

5.1 The schemes recommended to the Area Board will improve road safety for all users of the highway.

### 6. Safeguarding implications

### 7. Recommendations to Pewsey Area Board:-

7.1 To note the discussions and updates outlined in this report.

7.2 To close Issue numbers: 6879

Pewsey CATG expenditure 2019 / 20 as of 09/10/19

Budget £12,377 + £12,261.22 c/fwd = £24,638.22

Scheme	Estimate	CATG Commitment	Expenditure	Projected Spend
North Newnton Footway Phase 1	£62,964.47	£5,000.00	£24,000.00 interim	£62,964.47
Woodborough Footway	£24,000	£4,000.00	£5,730.60 interim	£24,000.00
Burbage 20 mph speed limit	£15,000 (ball park)	£5,000.00	£0,000.00	£15,000.00
Pewsey Rail Station	£775.00 (ball park)	£0,000.00	£0,000.00	£775.00
Rushall Elm Row	£55,000	£5,000.00	£0,000.00	£55,000.00
Chirton Footpath	£21,950.00	£4,500.00	£0,000.00	£21,950.00
Pewsey Cinder Path	£785.00	£628.00	£1,022.30 Final	£1,022.30
Pewsey Swan Road	£410.90	£360.90	£0,000.00	£410.90
North Newnton Footway Phase 2	£82,200.55	£5,000.00	£0,000.00	£82,200.55
East Grafton Traffic Management	£5,000 (ball park)	£750.00	£0,000.00	£5,000.00
Totals	£268,085.92	£30,238.90	£30,752.90	£268,323.22

Budget £24,638.22

Projected Spend £268,323.22

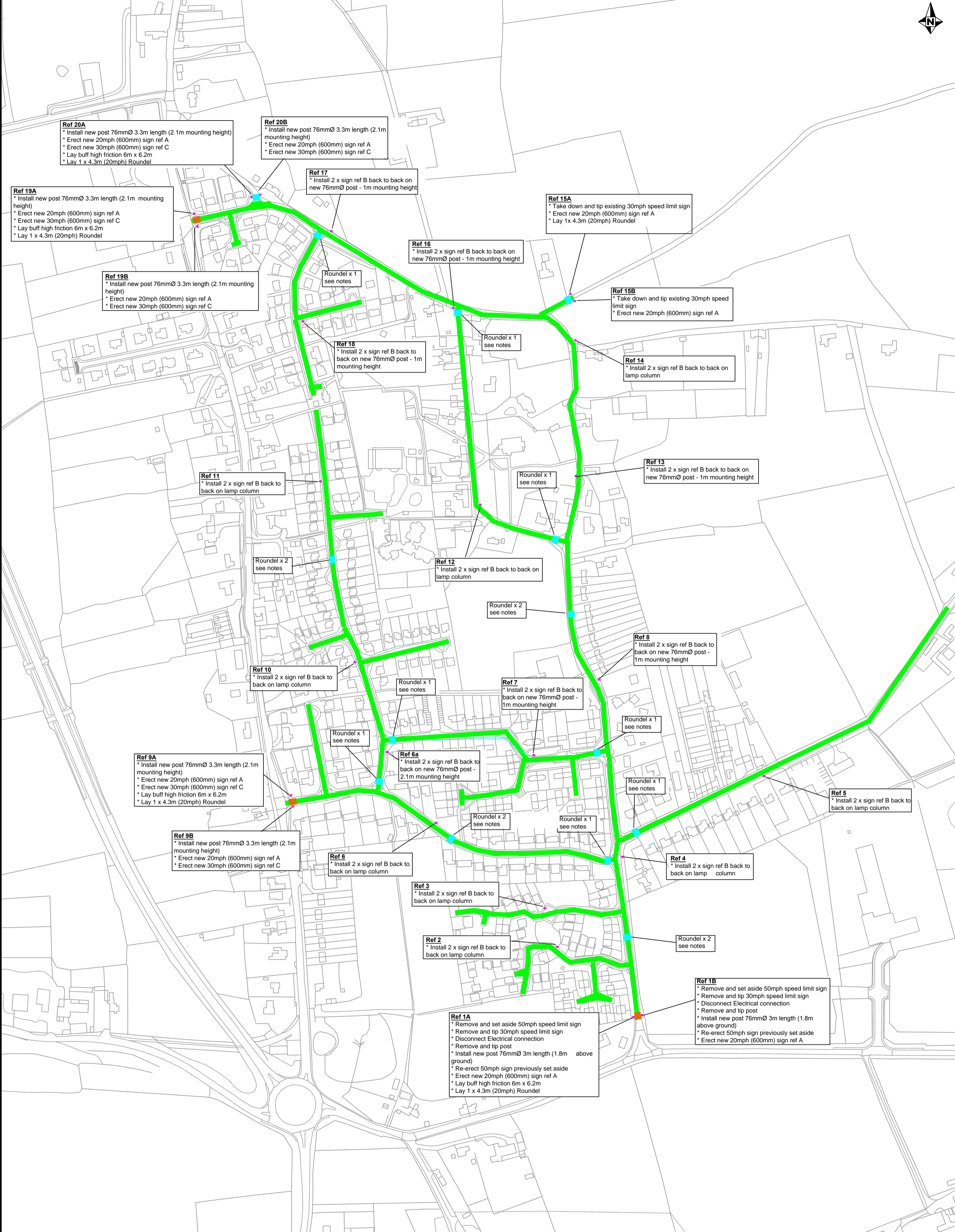
Balance -£243,685.00

Contributions (details overleaf) £237,847.02

**Overall Balance -£5,837.98**

Contributions		
North Newnton Footway Phase 1	£15,000.00	North Newnton Parish Council – to be invoiced upon completion
North Newnton Footway Phase 1	£42,964.47	Substantive Highways Fund
Woodborough Footway	£6,000.00	Woodborough Parish Council – to be invoiced upon completion
Woodborough Footway	£14,000.00	Substantive Highways Fund
Burbage 20 mph speed limit	£10,000.00	Burbage Parish Council – to be invoiced upon completion
Pewsey Rail Station	£775.00	Pewsey Parish Council – to be invoiced upon completion
Rushall Elm Row	£5,000.00	Rushall Parish Council – to be invoiced upon completion
Rushall Elm Row	£45,000.00	Substantive Highways Fund – subject to successful bid
Chirton Footpath	£4,500.00	Chirton Parish Council – to be invoiced upon completion
Chirton Footpath	£12,950.00	Substantive Highways Fund – subject to successful bid
Pewsey Cinder Path	£157.00	Pewsey Parish Council - to be invoiced upon completion
Pewsey Swan Road	£50.00	Pewsey Parish Council – to be invoiced upon completion
North Newnton Footway Phase 2	£5,000.00	North Newnton Parish Council – to be invoiced upon completion
North Newnton Footway Phase 2	£72,200.55	Substantive Highways Fund – subject to successful bid
East Grafton Traffic Management	£250.00	Grafton Parish Council – to be invoiced upon completion
East Grafton Traffic Management	£4,000.00	Highway Maintenance Fund
Total	£237,847.02	





**NOTES:**

**ALL POSTS/BACKINGS/BRACKETS TO BE BLACK**  
**All sign post foundations to be 600mmM3**  
**WC Engineer to mark out works prior to works start**

**LINING/HFS DETAILS:**  
 20mph roundels at terminal points into village (where stated) with BUFF HFS

**LINING DETAILS:**  
 20mph roundels (1 or 2) at various locations in village (where stated) laid on carriageway

Page 47

**Wiltshire Council**  
 Where everybody matters  
**Traffic & Network Management**  
 County Hall, Bythesea Road, Trowbridge  
 Wiltshire, BA14 8JD  
 Tel: 0300 4560100  
 Website: www.wiltshire.gov.uk

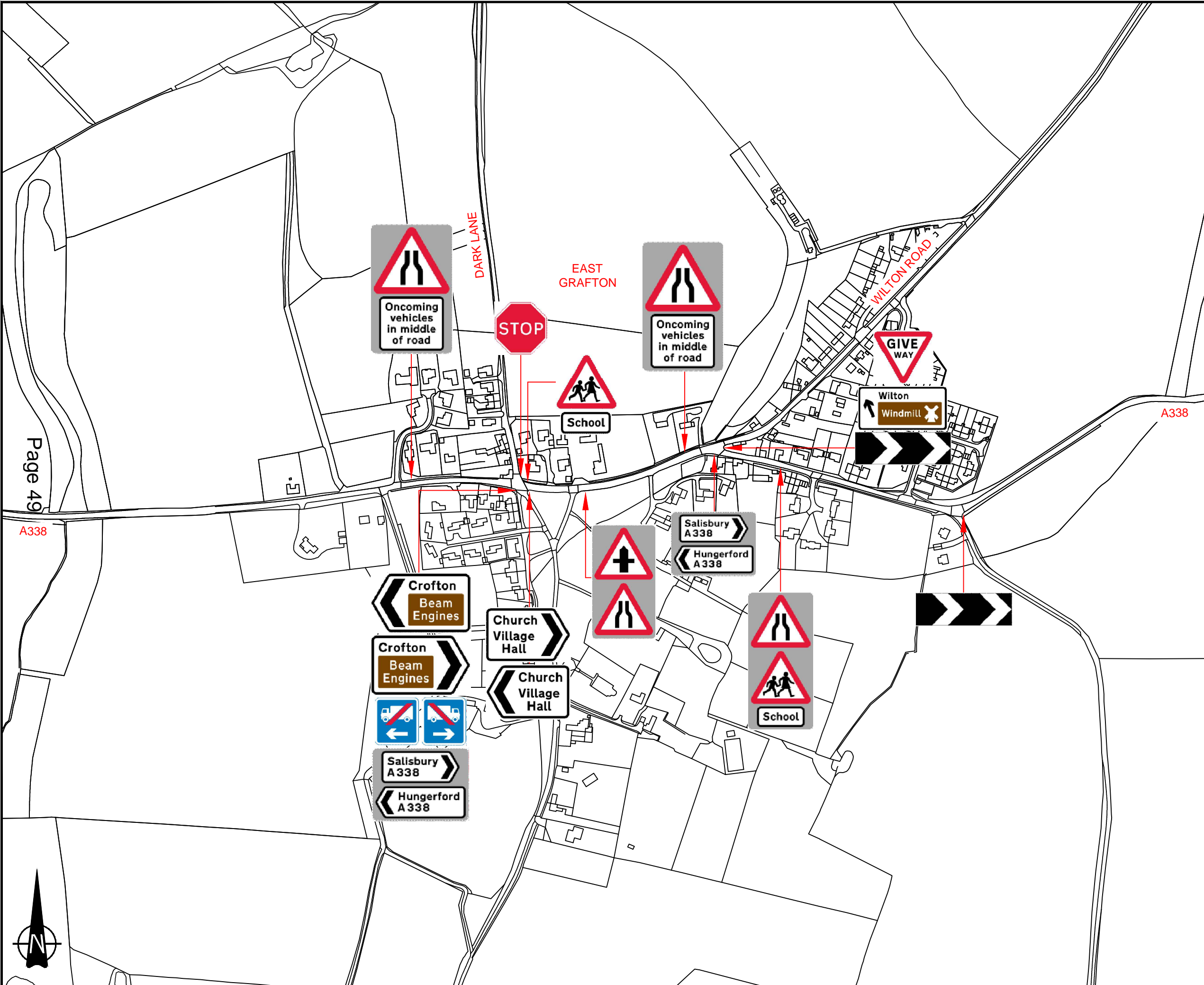
This map is reproduced from Ordnance Survey material with the permission of Ordnance Survey on behalf of the Controller of Her Majesty's Stationary Office  
 © Crown copyright.  
 Unauthorised reproduction infringes Crown Copyright and may lead to prosecution or Civil Proceedings.  
 Wiltshire Council (100049050) 2019

F					
E					
D					
C					
B					
A					
O	10/19	SLD	MJS	MJS	ORIGINAL
REV	DATE	DRAWN	CHECK	APPROV	DESCRIPTION
DRAWING PURPOSE:					
DESIGN					

PROJECT:	BURBAGE 20 MPH SPEED LIMIT		
DRAWING TITLE:	DESIGN		
SCALES:	NOT TO SCALE	SHEET SIZE:	A2
DRAWING NO:	2018-174/SLD/BURB/D002	REVISION:	0
FILE REF:	L/TET/AB/PEWSEY/		



This page is intentionally left blank



Page 49

A338

NOTES:  
 \*\*\*\*ALL NEW SIGNS WILL BE ERECTED ON NEW BLACK POSTS. ALL EXISTING WARNING AND DIRECTIONAL SIGNS (AND POSTS) WILL BE REMOVED\*\*\*\*

This map is reproduced from Ordnance Survey material with the permission of Ordnance Survey on behalf of the Controller of Her Majesty's Stationery Office © Crown copyright.  
 Unauthorised reproduction infringes Crown Copyright and may lead to prosecution or Civil Proceedings.  
 Wiltshire Council (100049050) 2019

**Wiltshire Council**  
 Where everybody matters  
**Traffic & Network Management**  
 County Hall, Bythesea Road, Trowbridge  
 Wiltshire, BA14 8JD  
 Tel: 0300 4560100  
 Website: www.wiltshire.gov.uk

F					
E					
D					
C					
B					
A					
O	9/10/19	P.T.R	M.J.S	M.J.S	ORIGINAL
REV	DATE	DRAWN	CHECK	APPRV	DESCRIPTION

DRAWING PURPOSE:  
**PROPOSAL**

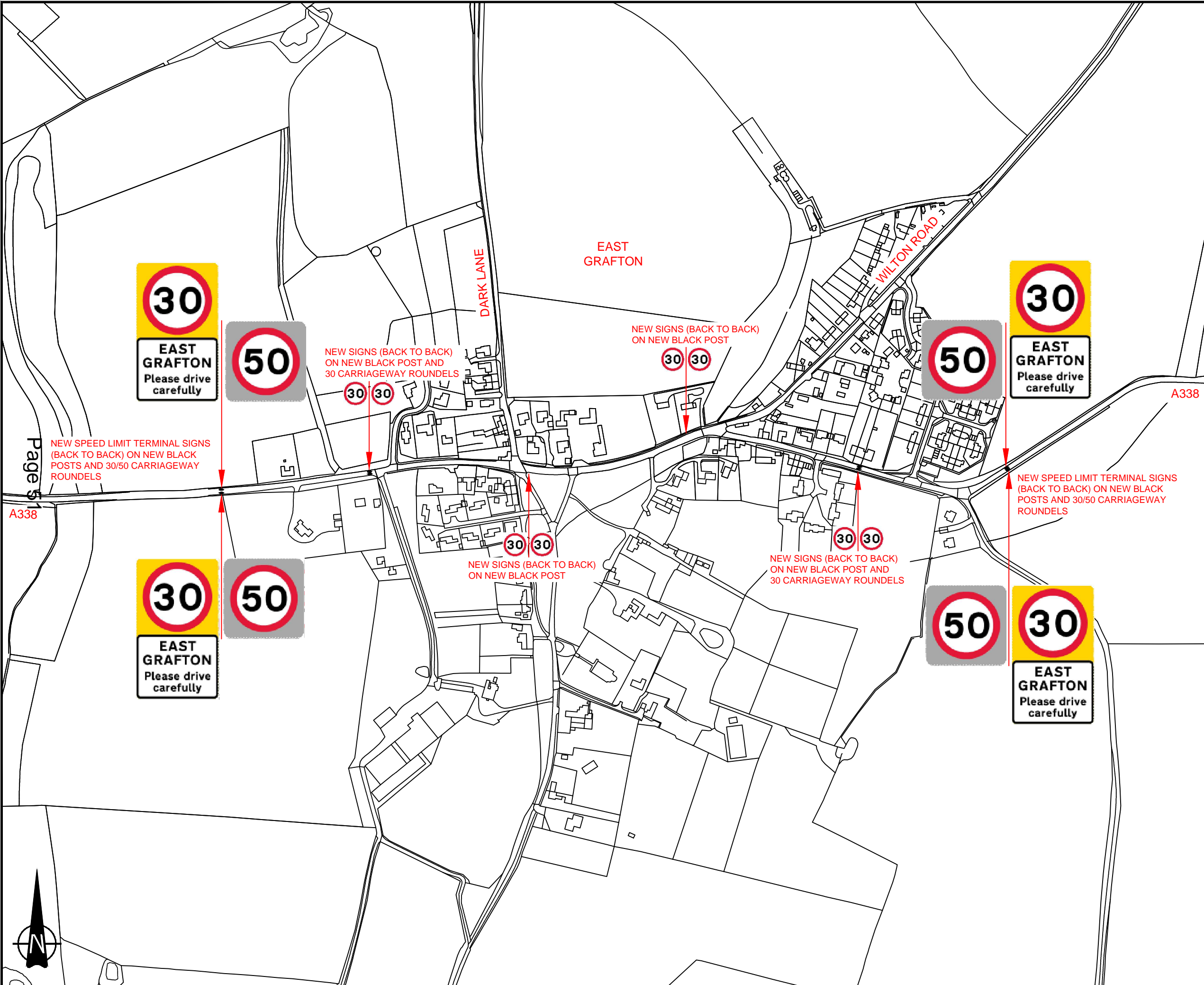
PROJECT:  
 SIGNING AND LINING IMPROVEMENTS - EAST GRAFTON

DRAWING TITLE:  
 PROPOSED WARNING AND DIRECTIONAL SIGNS

SCALES:	NOT TO SCALE	SHEET SIZE:	A3
DRAWING No.	2019-095/GRAF/PTR/D002	REVISION:	O
FILE REF:	I:\Signs & Road Markings\PH\2019_JOBS\East Grafton\Consultation Plan		



This page is intentionally left blank



NOTES:  
 \*\*\*\*ALL EXISTING SPEED LIMIT SIGNS (AND POSTS) WILL BE REMOVED\*\*\*\*

This map is reproduced from Ordnance Survey material with the permission of Ordnance Survey on behalf of the Controller of Her Majesty's Stationery Office © Crown copyright.  
 Unauthorised reproduction infringes Crown Copyright and may lead to prosecution or Civil Proceedings.  
 Wiltshire Council (100049050) 2019

**Wiltshire Council**  
 Where everybody matters  
**Traffic & Network Management**  
 County Hall, Bythesea Road, Trowbridge  
 Wiltshire, BA14 8JD  
 Tel: 0300 4560100  
 Website: www.wiltshire.gov.uk

F					
E					
D					
C					
B					
A					
O	9/10/19	P.T.R	M.J.S	M.J.S	ORIGINAL
REV	DATE	DRAWN	CHECK	APPRV	DESCRIPTION

DRAWING PURPOSE:  
**PROPOSAL**

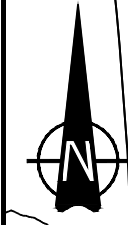
PROJECT:  
 SIGNING AND LINING IMPROVEMENTS  
 - EAST GRAFTON

DRAWING TITLE:  
 PROPOSED SPEED LIMIT SIGNING  
 AND CARRIAGEWAY ROUNDELS

SCALES:	NOT TO SCALE	SHEET SIZE:	A3
DRAWING No.	2019-095/GRAF/PTR/D001	REVISION:	O
FILE REF:	I:\Signs & Road Markings\PH\2019_JOBS\East Grafton\Consultation Plan		

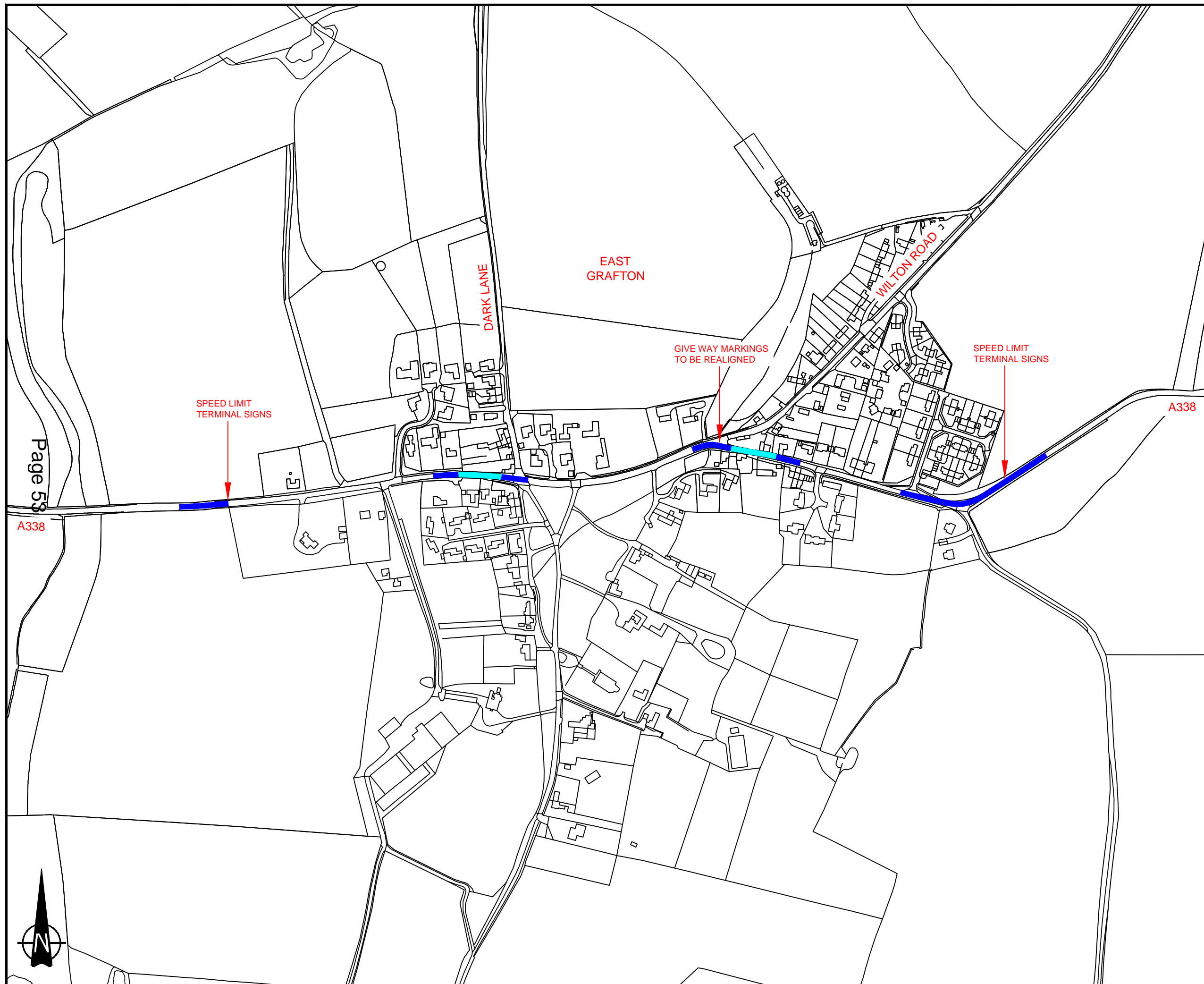
Page 5

A338



This page is intentionally left blank





Page 59

A338

- NOTES:
- SOLAR ROAD STUDS IN CENTRE OF ROAD
  - EDGE OF CARRIAGEWAY SOLAR ROAD STUDS

\*\*\*\*CENTRE LINE ON A338 DUE TO BE REFRESHED FROM BURBAGE ROUNDABOUT TO WEXCOMBE JUNCTION\*\*\*\*

SPEED LIMIT TERMINAL SIGNS

GIVE WAY MARKINGS TO BE REALIGNED

SPEED LIMIT TERMINAL SIGNS

A338

This map is reproduced from Ordnance Survey material with the permission of Ordnance Survey on behalf of the Controller of Her Majesty's Stationery Office © Crown copyright.  
 Unauthorised reproduction infringes Crown Copyright and may lead to prosecution or Civil Proceedings.  
 Wiltshire Council (100049050) 2019



**Traffic & Network Management**

County Hall, Bythesea Road, Trowbridge  
 Wiltshire, BA14 8JD  
 Tel: 0300 4560100  
 Website: www.wiltshire.gov.uk

F					
E					
D					
C					
B					
A					
O	9/10/19	P.T.R	M.J.S	M.J.S	ORIGINAL
REV	DATE	DRAWN	CHECK	APPRV	DESCRIPTION

DRAWING PURPOSE:  
**PROPOSAL**

PROJECT:  
 SIGNING AND LINING IMPROVEMENTS - EAST GRAFTON

DRAWING TITLE:  
 ROAD STUDS AND OTHER LINING

SCALES:	NOT TO SCALE	SHEET SIZE:	A3
DRAWING No.	2019-095/GRAF/PTR/D003	REVISION:	O
FILE REF:	I:\Signs & Road Markings\PH\2019_JOBS\East Grafton\Consultation Plan		

This page is intentionally left blank



<b>Report to</b>		Pewsey Area Board		
<b>Date of Meeting</b>		11/11/2019		
<b>Title of Report</b>		Community Area Grant funding		
Provisional Figures	Area Board Grants Budget	H&WB Fund	LYN Fund	CATG
Opening balance 2018/19	£30,723.00	£7,700.00	£13,040.00	
Grant Applications Awarded to date	£16,716.00	£3,200.00	£10,459.00	-
Current Balance	£14,278.00	£4,500.00	£3,071.00	
Balance if all grants are agreed at this meeting	£9,314.00	£4,500.00	£3,071.00	N/A

**Purpose of the report:**

To consider the applications for funding listed below

<b>Applicant</b>	<b>Amount requested</b>
<p><b>Applicant:</b> Shalbourne Village Hall Management Committee  <b>Project Title:</b> Shalbourne Village Hall Updating and Improvement work - Phase 2</p> <p><a href="#">View full application</a></p>	£2464.00
<p><b>Applicant:</b> The Bouverie Hall  <b>Project Title:</b> Male Toilet Refurbishment</p> <p><a href="#">View full application</a></p>	£2500.00

**1. Background**

Area Boards have authority to approve Area Grants under powers delegated to

them. Under the Scheme of Delegation Area Boards must adhere to the [Area Board Grants Guidance](#)

[The funding criteria and application forms](#) are available on the council's website.

## 2. Main Considerations

2.1. Councillors will need to be satisfied that funding awarded in the 2019/2020 year is made to projects that can realistically proceed within a year of it being awarded.

2.2. Councillors must ensure that the distribution of funding is in accordance with the Scheme of Delegation to Area Boards.

2.3. Councillors will need to be satisfied that the applications meet the Community Area Board grants criteria.

## 3. Environmental & Community Implications

Grant Funding will contribute to the continuance and/or improvement of cultural, social and community activity and wellbeing in the community area, the extent of which will be dependent upon the individual project.

## 4. Financial Implications

Financial provision had been made to cover this expenditure.

## 5. Legal Implications

There are no specific legal implications related to this report.

## 6. Human Resources Implications

There are no specific human resources implications related to this report.

## 7. Equality and Inclusion Implications

Community Area Boards must fully consider the equality impacts of their decisions in order to meet the Council's Public Sector Equality Duty.

Community Area Grants will give local community and voluntary groups, Town and Parish Council's equal opportunity to receive funding towards community based projects and schemes, where they meet the funding criteria.

## 8. Safeguarding Implications

The Area Board has ensured that the necessary policies and procedures are in place to safeguard children, young people and vulnerable adults.

## 9. Applications for consideration

Application ID	Applicant	Project Proposal	Requested
<a href="#">3482</a>	Shalbourne Village Hall Management Committee	Shalbourne Village Hall Updating and Improvement work - Phase 2	£2464.00

**Project Description:**

Shalbourne Village Hall has been at the center of the Village community since it was constructed in 1843. Built as a bible school it has gradually evolved into a home and meeting place for Village organisations and activities. These facilities must remain attractive vibrant and accessible for future generations and after consulting with the village community phased refurbishment and improvement works were planned. Local fundraising and third party grants enabled us to successfully complete Phase 1 during 2018. Having made the main Hall watertight and warm Phase 2 is to replace the existing plastic windows essential stonework repairs and improved accessibility.

**Input from Community Engagement Manager:**

- The grant meets the criteria and can be considered for an award
- A condition of any award made by the area board to village halls is that the Area Board should not be charged if the area board holds any future meetings in this venue.

**Proposal**

That the Area Board determines the application.

Application ID	Applicant	Project Proposal	Requested
<a href="#">3340</a>	The Bouverie Hall	Male Toilet Refurbishment	£2500.00

**Project Description:**

The male toilets in The Bouverie Hall need replacing. Many of the fixtures and fittings are from when the building was first built in 1989. The urinals sinks cubicles flooring and a new extraction fan will be installed along with energy efficient lighting and automatic switch on off sensors. We have lost potential bookings of the hall due to the condition of these toilets.

**Input from Community Engagement Manager:**

- The grant meets the criteria and can be considered for an award
- A condition of any award made by the area board to village halls is that the Area Board should not be charged if the area board holds any future meetings in this venue.

**Proposal**

That the Area Board determines the application.

No unpublished documents have been relied upon in the preparation of this report

**Report Author:**

Richard Rogers

Community Engagement Manager

[Richard.Rogers@wiltshire.gov.uk](mailto:Richard.Rogers@wiltshire.gov.uk)

This page is intentionally left blank

## Area Board Update November 2019

### Military families' experience of Health and Social Care Transition



We've launched a survey to ask military families how they access GP surgeries, dental care, mental health, social care and other services.

This summer, as part of the Army Basing Programme, 4,000 service personnel and their families relocated to Wiltshire from Germany, and we want to find out about how easy it has been for them to find new services and the continuity of care they have received after they have been transferred.

We're also keen to know how health services in Wiltshire compare to where they lived before.

To find out more or complete the survey please visit: <https://www.healthwatchwiltshire.co.uk/military-families-project>

The survey will be running until the end of December when all the findings will be analysed and shared in a report.

This page is intentionally left blank

**November 2019**

## The right healthcare, for you, with you, near you

NHS Wiltshire Clinical Commissioning Group (CCG) is responsible for commissioning a broad range of healthcare for the population of Wiltshire. We are led by experienced local GPs drawn from across the county, who provide clear clinical leadership to the big decisions affecting the future of healthcare provision in Wiltshire, carefully tailored to meet the differing needs of people locally.

Our vision is to ensure the provision of a health service which is high quality, effective, clinically-led and local. We are committed to delivering healthcare that meets the needs of Wiltshire people, to consult and engage with our population to enable them to be involved in decisions made about health services and to deliver those services to people in their own homes or as close to home as possible.

### News

#### Three CCGs to merge

Over September and October we've been progressing the proposal to merge with Bath and North East Somerset, and Swindon CCGs.

In September, the GPs in the region voted in favour of the merger proposal. Following this the Governing Bodies of the three CCGs agreed to submit an application to merge to NHS England and Improvement. This application was made with a proposed merge date of 1 April 2020.

We are pleased to say that NHS England and Improvement have approved our application and we will become BSW CCG in April next year.

We will continue to provide you with updates over the coming months.

---

#### New Chief Operating Officer for Wiltshire

Earlier in the year we started building one management structure for the three CCGs to take us into the possible merger and a lot of those roles are now in place, with some vacancies still to be filled.

In the new structure, each of the three CCGs has a Chief Operating Officer role. Ted Wilson, Director of Community Services and Joint Commissioning, has been appointed as Acting Chief Operating Officer for Wiltshire. Recruitment is ongoing to find a permanent appointee.

The Chief Operating Officer for Bath and North East Somerset CCG is Corinne Edwards and Swindon CCG are also currently recruiting for their COO.

---



## Our Health Our Future – the results

Earlier in the year we asked the people of Bath and North East Somerset, Swindon and Wiltshire to help us shape the future of local health and care services.



More than 2000 people took part in Our Health Our Future by completing a survey and talking to us at events and on the streets.

People taking part in the survey said they would like to be given the opportunities, advice and information they need to live healthier lifestyles and be more aware of symptoms of diseases such as diabetes and high blood pressure so they could seek help earlier.

They said it should be easier to see staff at surgeries and waiting times for appointments and operations in hospitals should be reduced.

Lots of respondents also said they didn't always feel listened to or taken seriously by the health and care professionals they saw. Younger respondents said they would value better access to mental health services and support.

The survey results, alongside separate findings collected by independent health champion Healthwatch, will now be used by health and care leaders as they develop plans for how services across the area will be organised over the next five years.

The Our Health Our Future website has the full results – [www.ourhealthourfuture.org](http://www.ourhealthourfuture.org).

---

## Governing Body meeting

Our next Governing Body meeting will be BaNES, Swindon and Wiltshire (BSW) Governing Bodies in common meeting on Wednesday 13 November 2019 at 5.00pm at Cumberwell Park, Bradford on Avon, Wiltshire, BA15 2PQ.

You can read the papers from previous meetings on our website [www.wiltshireccg.nhs.uk/governance/governing-body-meetings-in-public](http://www.wiltshireccg.nhs.uk/governance/governing-body-meetings-in-public)

---

## News archive

Read more news from Wiltshire CCG in our [news archive](http://www.wiltshireccg.nhs.uk/news/news-archive) – [www.wiltshireccg.nhs.uk/news/news-archive](http://www.wiltshireccg.nhs.uk/news/news-archive).

---

**Keep up to date with news and information from Wiltshire CCG on social media.**



## Report from the Pewsey Community Area Partnership to Parish Councils & the Pewsey Area Board

I cannot believe that another year has gone by. It hardly seems like five minutes since I was writing to you asking for support to raise funds for the Raizor Chair for our volunteer Community First Responders. Thanks to funds from our parishes, the Health and Wellbeing group via Pewsey Area Board and the Friends of Savernake Hospital Trust, by January we had secured funding for **two** Raizor chairs for the South West Ambulance Trust Charity (the part of the Ambulance Trust that trains the first responders). We are going to have an update on their use at the next Pewsey Area Board in Burbage on Monday 11th November along with a demonstration for those who haven't seen this equipment in action.

Pewsey Community Area Partnership continues to work for our wider community and I am once again asking that parish councils consider giving us financial support for another year. I am aware that some are in the midst of large projects with a commensurate financial burden. All I ask is that you consider giving us a contribution that you can afford or that you feel reflects what we do for your parish.

We continue to administer the Health and Wellbeing Group and its funds with Cllr Stuart Wheeler as our chairman. There are funds still available for projects which should benefit the elderly if you wish to apply. We are currently collating a bid for chairs with arms for village halls where the elderly or infirm might struggle to rise without the support of chair arms. If you are interested in having one or two of these chairs for your hall and haven't already done so, please [contact Susie](#) before **Monday 11<sup>th</sup> November** when the order will be consolidated. We will apply for the funds so the chairs will be free to the halls but you will need to collect them from the delivery point.

We run the Pewsey Vale Memory Café which takes place on the third Monday of the month at the room at Pewsey Fire Station. This is a friendly, relaxed group where we have many activities, talks and so on throughout the year, as well as a summer outing, which this year was a canal boat trip with The Bruce Trust. Attendees come from every corner of the Pewsey Community Area so this is something that benefits many villages. The latest poster is attached for you to publicise this group but do [get in touch](#) if you know someone who might benefit from joining us.

PCAP is piloting a new music and movement together group which runs every two weeks. This has been very successful and has the support of the local surgery and uses social prescribing. Each candidate is assessed for the suitability of the sessions which can be seated or standing exercises. Sylvie Clayden has led this to success and hopes to build on it in the new year.

Colin Gale and a small group of supporters including a representative of CPRE and Pewsey Parish Council continue to scrutinise Wiltshire Councils consultation methodology, with some success.

Colin also supports us to run the Pewsey Vale Rail User Group and the recent meeting with Great Western Railway representatives in Pewsey talking about the new timetable to be launched on December 16th, was attended by around sixty people. This is the biggest change nationally since 1976, so don't be caught out!

Both Susie and I, along with Kerry Pycroft of Pewsey Parish Council, will be conducting another footfall survey in Pewsey this week. This will add to the data we collected in May and will hopefully help to guide the economic growth locally.

The Local Youth Network hasn't met for a while but we have succeeded in booking the Blue Youth Bus to work in Burbage and Upavon. This was no mean feat. Whilst the work to secure a wheeled sports facility for Pewsey continues with the support of Pewsey Parish Council, the LYN will also try

to arrange fun days for local families in the half term. The ice rink may yet make a comeback for Valentines if it can be arranged.

PCAP has also just successfully arranged for Wiltshire Mind to deliver a mental health course for the staff at Pewsey Vale School. We are now working with them to look at how we might offer a level two qualification in Youth Mental Health.

Susie continues to work wonders with the Tourism Partnership. The latest newsletter is chock full of stuff and [can be found here](#) - please share. The walking leaflets have been an outstanding success and are also [available for download online](#). The videos promoting the Vale as a place to visit and stay are also showing success - the [Imagine video](#) which promotes our accommodation partners and [the Vale of Pewsey promotional film](#). We await the outcome of a bid for funds to print large quantities of the walking and cycling leaflets and to develop an app to compliment them. I would like to thank the Co-op for the funding for this community group, as well as the North Wessex Downs Landscape Trust, Tescos and the Pewsey Area Board - all of whom have made an enormous difference to its viability through the creation of assets that benefit everyone. If you, as a parish council, would like a page on the website, then [contact Susie to find out more details](#).

Those are the highlights from the past twelve months - and I am sure there are some I have overlooked! I am looking forward to a quiet Christmas.

The Memory Cafe will be singing carols in the Bouverie Hall on the third Monday in December from 2pm. I might persuade Susie and Sylvie to join me as a trio in an old classic carol. I must remind Susie to secure a pianist or we will be singing without accompaniment!

Whatever you are doing, please accept my heartfelt thanks for your support and for the work you do for your communities. Parish councils might be small in the democratic scale but collectively we can be mighty, or is that just more efficient? If you would like to get involved or support any of our projects please contact Susie. We are always looking for reliable help.

Dawn Wilson  
Chair of PCAP, PVRUG and PVTP